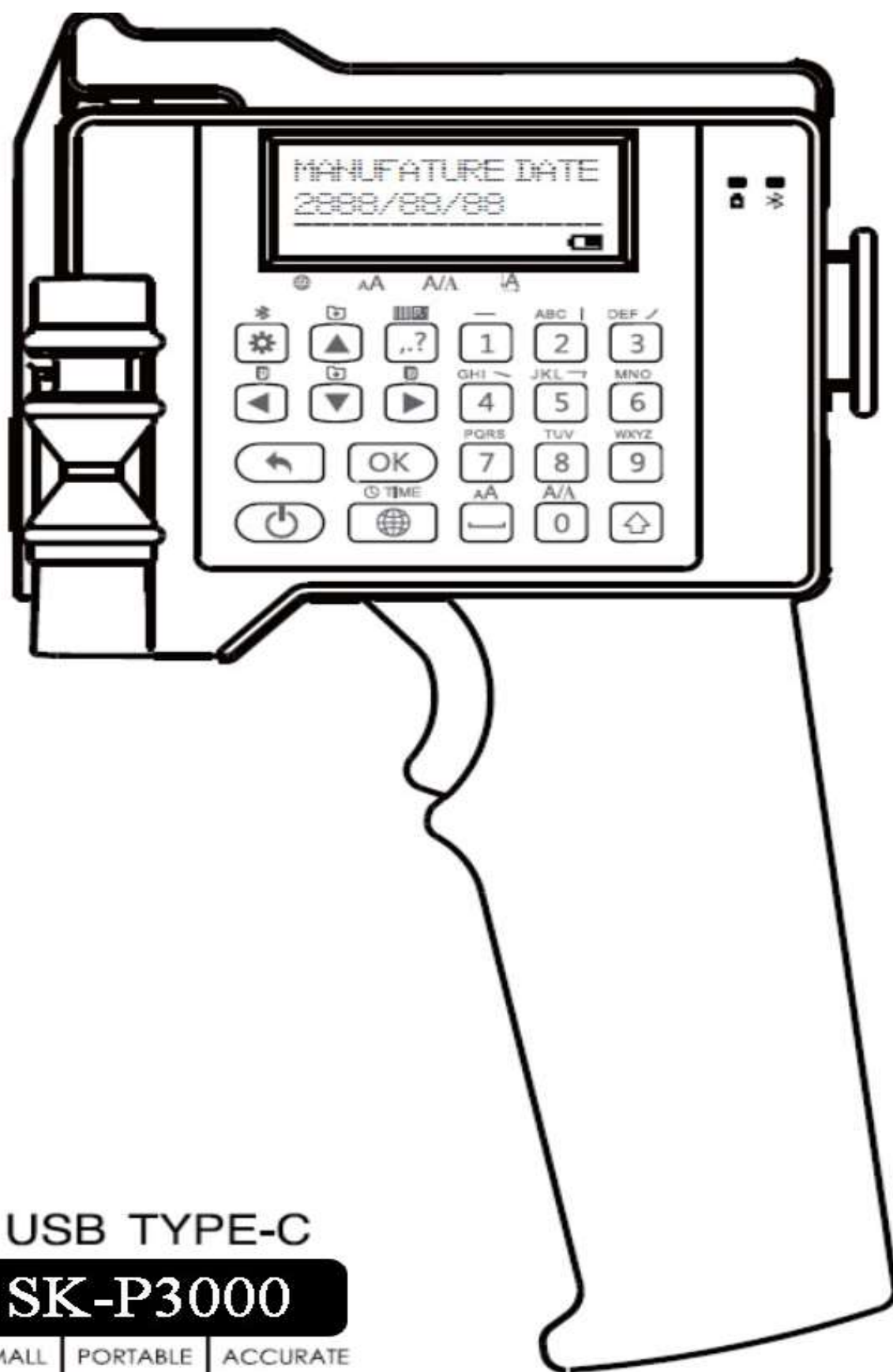


HANDHELD PRINTER,WE ARE PROFESSIONAL.

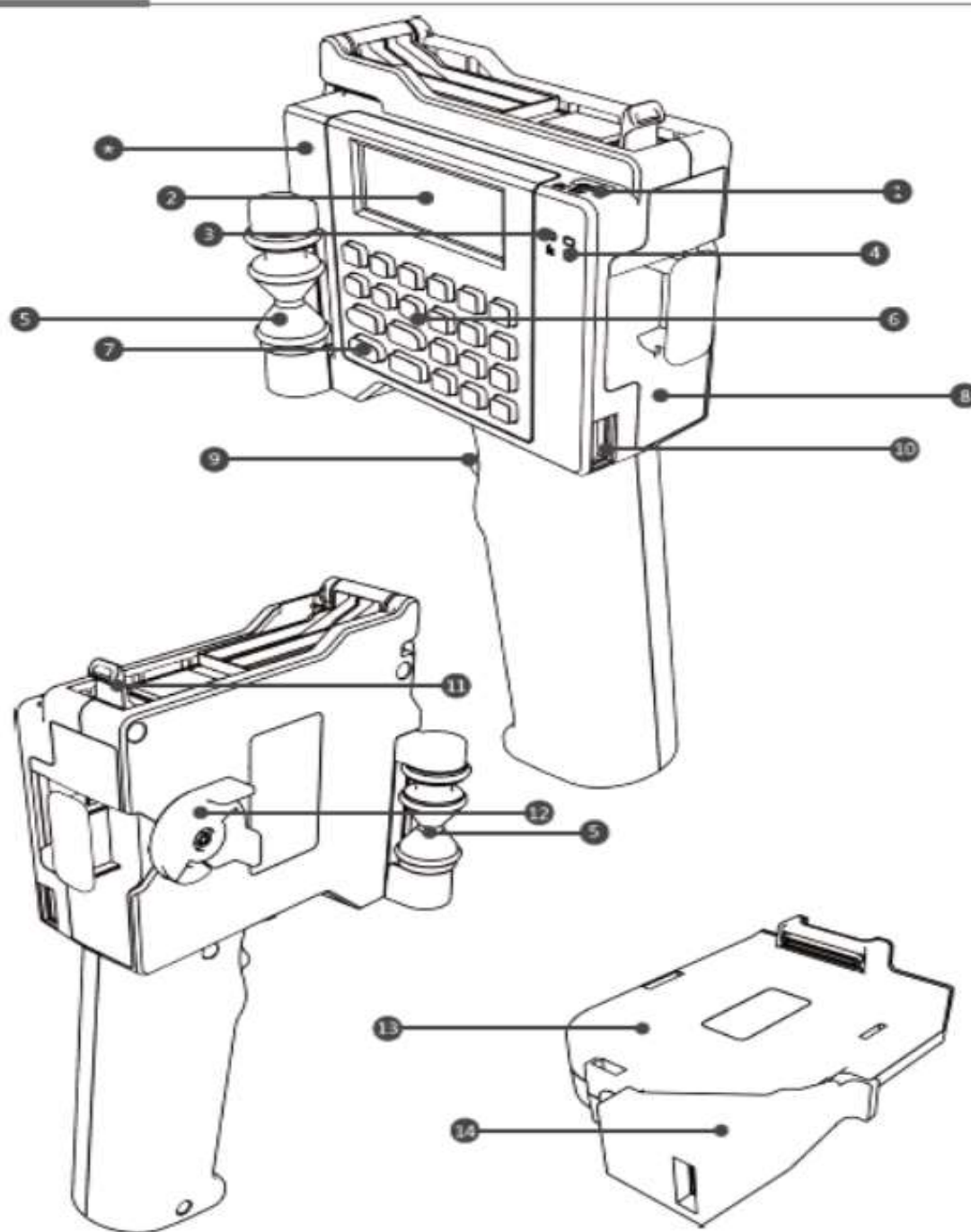


USB TYPE-C

SK-P3000

SMALL | PORTABLE | ACCURATE

PRODUCT DIAGRAM:



No.	Name	No.	Name
1	USB TYPE-C inlet(Only for charging)	8	Inlet for inserting cartridge
2	Screen	9	Print switch
3	Charging indicator	10	USB inlet (Reserved)
4	Blue tooth indicator	11	Cover for printer nozzle
5	Printer Roller	12	Knob lock for cartridge
6	Keyboard	13	Cartridge
7	Power button/ Power indicator	14	Cover for cartridge
*	复位键 RESET		

PRODUCT PARAMETER:

Product name: SK-P3000 handheld printer.
Size: about 209mm(length) x 113.5mm(height) x 75mm(width).
Weight: about 440g(including cartridge and battery).
Typeface: Highly legible typeface.
Print lines: 1 to 4 lines,and it can be adjusted.
Print graphics: The device can print almost all kinds of trademarks and graphics.
Print accuracy: 4 gray scales between 300dpi and 600dpi.
Print height: 3-12.5mm(The required height can be available between the range by adjusting the print set).
Print distance: 2-5mm(the distance between the print nozzle and the object that needs printing)
Print dirrection: Print within 360 degree.
Print code type: Bar code and QR code.
Print ink type: Waterbased ink, solvent ink(Waterbased ink is suitable for printing on the hydrocopicity material such as paper and carton etc.; Solvent ink is used for printing on plactic,glass,metal, tubular product, stone product,wood plate,fiber board,aluminium foil, cable and film etc.)
Ink color: black,red,blue,green,yellow,and white.
Information content in storage: 50
Print speed: the highest speed can be 50meter/minute(continous printing).
External inlet: USB inlet(type-c).
Control panel: Keyboard.
Machine weight: about 300g(excluding the cartridge).
System power consumption: average power consunption is below 1w.
Environment temperature and humidity: 1. Environment temperature: 0℃~40℃ ;
2. Environment humidity: 10%~80%.
Power supply parameter: 1.DC5V-2A;2. Lithium battery;3.The lithium can keep the machine standing by for over 30 days,and printing for 24 hours.

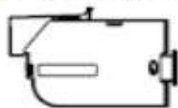
EQUIPMENT LIST OF THE WHOLE MACHINE:

Handheld printer x 1

Charger x 1

Ink Cartridge x1

Instruction book x 1



OPERATION INSTRUCTIONS:

- | |
|------------------------------------------------------------------------------------------------------------------------------------------------------|
| 1. Take off the protective cover from the ink cartridge. |
| 2. Turn the knob lock to make the cartridge nozzle unlocked ,then, insert the cartridge into the machine from the preserved inlet for the cartridge. |
| 3. When the cartridge is installed, screw the knob lock to fix the cartridge. |
| 4. Turn the nozzle cover from the nozzle to the machine top, revealing the cartridge nozzle. |
| 5. Press the machine power button to power on. |

